

PAVERS BY IDEAL

Turfstone™ Grid Pavers



Stones with Style™



Turfstone™ Grid Pavers

INTRODUCTION

Turfstone concrete grid pavers offer “greenspace” pavement design with the structural performance of high-strength concrete. Turfstone enables traffic to go where grass grows and is ideal for overflow parking, emergency access lanes, and areas with intermittent, low-speed vehicular traffic. When aggregate is used in the openings, Turfstone’s open-cell design provides stormwater runoff control, soil stabilization, and erosion control on slopes and embankments.

COMPOSITION & PERFORMANCE

Turfstone is machine-manufactured under controlled factory conditions using a cement-rich concrete molded with extreme pressure and vibration. Turfstone units offer exceptional strength and durability to withstand New England’s harsh winter climate. This lattice-style paver has apertures that comprise 40% of the surface area. The flat, grid-like units form a continuous pattern, and when properly installed, provide a pavement surface that is “snow-plow safe.”

- When the apertures are planted with grass, Turfstone “greenspace” pavement is suitable for residential use, vegetated swales, commercial, educational and municipal facilities, sports and music venues requiring overflow parking, as well as access lanes for emergency vehicles through greenways.
- Turfstone’s apertures also can be filled with aggregate for stormwater runoff management and is suitable for use on boat ramps, on embankments, slopes, river and low-flow channels, and on shorelines (without extreme wave action) to control erosion and provide soil stabilization.

PHYSICAL CHARACTERISTICS

Turfstone meets or exceeds North American industry standards, including the requirements of ASTM Specification C 1319 for Concrete Grid Paving Units. Our strict quality control ensures consistent strength, color and size.

Nominal Size/Coverage	23 3/8" x 15 3/4" • 2.6 sf/pc
Thicknesses	3 1/8" (8 cm)
Compressive Strength	5000 psi minimum
Water Absorption	10 lb/ft ³ maximum
Freeze Thaw	No effect as demonstrated through proven field performance

TECHNICAL SERVICES

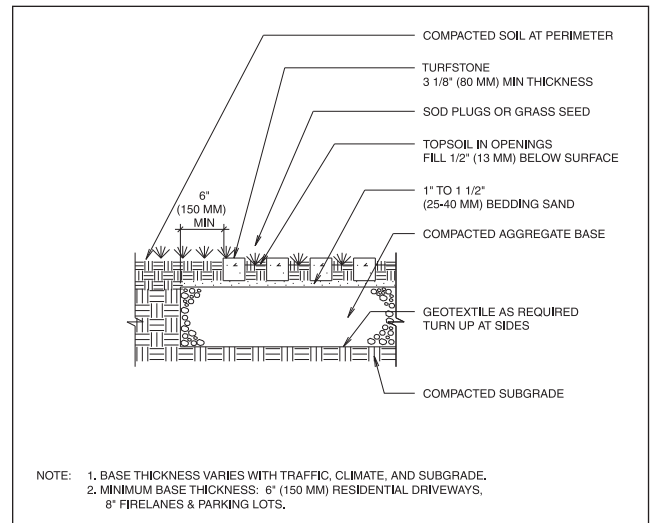
Please contact our office to obtain a copy of our Master Specification, as well as comprehensive technical information and literature, including our Lockpave® Pro software. Ideal is pleased to offer design consultation, specification assistance, and job-site quality review upon request.

DESIGN, CONSTRUCTION & PATTERNS

Turfstone parking applications can be designed with a dense-graded base, or for infiltration and storage of stormwater, with an open-graded base. Proper design, material selection, and construction of the base are essential to successful performance. For erosion control applications, Turfstone may be placed directly on graded and compacted soil. Please see ICPI’s Tech Spec No. 8 for detailed guidance on design and installation.

Turfstone can be installed in either a stack bond or a running bond with a 3/4 offset. Place the side with the false joints facing up. Solid interlocking pavers can be placed in walkways, paths, and on ramps to accommodate pedestrian foot traffic and to provide a firm, stable and slip-resistant surface for visually-impaired persons or those using wheeled mobility devices. This also would apply to handicap parking bays.

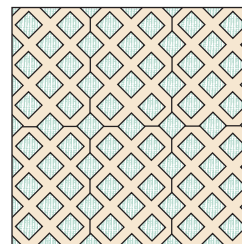
TYPICAL CROSS SECTIONS & PATTERNS



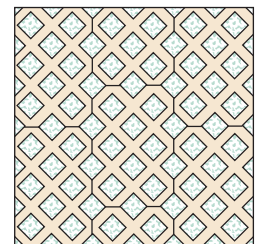
Fire Lane, Driveway, Intermittent Parking

See www.IdealConcreteBlock.com for additional Turfstone Cross Sections:

- Slope Protection • Riparian Stabilization - Stream Banks & Lakes
- Stormwater Runoff Control • Ditch Liner for Intermittent Flows • Boat Ramp



Stack Bond



Running Bond 3/4 Offset

A white deposit known as efflorescence may appear naturally on any concrete or masonry product. It does not affect the structural integrity and will dissipate over time. Efflorescence is not indicative of a flawed product. For more information, please ask for our Efflorescence Advisory.

©2005 Ideal Concrete Block Company, Inc.

45-55 Power Road, Westford, MA 01886
232 Lexington Street, Waltham, MA 02452

Main Phone: (781) 894-3200 • Main Fax: (978) 692-0817
www.IdealConcreteBlock.com



A Registered Trademark of Ideal Concrete Block Company, Inc.