



Discover a Life Embraced Outdoors

TABLE OF CONTENTS

4-5	OUR HISTORY	100-109	COPING
6-7	LIFE EMBRACED OUTDOORS	102-103	Ancestral Coping
8-9	FEATURED PROJECT	104-105	Universal Coping
10-39	DISCOVER A LIFE EMBRACED OUTDOORS	106-107	8" BullNose Coping
		108-109	CastStone RockFace Coping
40-61	COLOR 4D PAVERS	110-125	ELEMENTS
44-45	Andover Collection Smooth	112-113	Rockport Steps 2.0
46-47	Andover Collection StoneCleft	114-115	Rockport Pathway Stones
48-49	Andover GrandStone Smooth	116-117	Chelmsford Step
50-51	Andover 5511 Smooth	118-119	Carlisle Pillar Cap
52-53	Andover 5511 StoneCleft	120-121	Olde Boston Fire Pit
54-55	Newbury Brick	122-123	Roman Pisa Fire Pit
56-57	Portsmouth Cobble	124-125	ScapeStone & ScapeStone XL Fire Pit
58-59	StraightLine		
60-61	Windsor Slab	126-133	HEARTHSCAPES
62-67	TUMBLED PAVERS	128-129	Belknap Series
64-65	MillStone	130-131	Fairfield Series
66-67	Georgetown Colonial	132-133	Universal Side Storage Box
		132-133	Chimney Extension
68-79	TRADITIONAL PAVERS	134-143	NATURAL STONE
70-71	Boston Colonial Pavers	136-137	Natural Stone Veneer
72-73	BrookStone	138-139	Granite
74-75	Ridge Hill Collection Smooth	140-141	Bluestone
76-77	Ridge Hill Collection StoneCleft	142-143	Bulk & Palletized Stone
78-79	Yankee Cobble		
80-87	PERMEABLE PAVERS	144-145	MEETING YOUR EXPECTATIONS
82-83	Aqua-Bric & Aqua-Bric 8	145	INFORMATION
84-85	Turfstone	146	PAVER INSTALLATION
86-87	Permeable Options	146	RETAINING WALL INSTALLATION
88-99	WALLS		
90-91	Ancestral WallStone		
92-93	Fat Face		
94-95	Fat Face 2.0		
96-97	Olde Boston Wall		
98-99	Roman Pisa		

ICON LEGEND



Commercial/
Municipal



Driveway



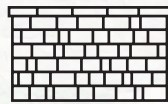
Poolside



Patio/
Walkway



Garden Wall



Retaining Wall



Step



Pillar



Outdoor
Kitchen



Fire Pit



Fireplace



Finishing
Touches

FEATURES LEGEND



Est. 1923

OUR HISTORY

Over 100 years ago, our grandfather Leo Burgoyne had a vision for his family and newly formed company. Named after the machine used to produce the product he sold, Ideal manufactured concrete blocks for homes throughout the Boston area.

With a robust work ethic and unwavering determination Leo labored for his dreams... seven days a week, year after year...during the Great Depression and World War II years that followed.

His benchmarks were quality and service. His motto "Through service we grow." This philosophy was passed on to our father when he ran the company during the mid 1950's until his retirement in 1990 and is still the foundation of our company today.

Little did our grandfather know, when he started his small block company a century ago, his values would be embraced by four generations and that his company would grow beyond local boundaries and earn a reputation as a company of excellence throughout the country and indeed... around the world.



1923

APRIL 1, 1923

Leo Burgoyne starts his block company with one Ideal Hand Tamp Block Machine at Lexington Street in Waltham (300 block per 10 hour day).

1966

Leo's son Joe installs the first automated Columbia block plant at the Waltham location.

1975

Ideal is the first company in the United States to produce Lockstone™ Paving Stones (8000 sf of pavers per day).

1983

John Burgoyne Sr. receives patent on Roofblok™ ballast system from USPTO.

1985

Ideal starts production of the first automated Zenith paving plant in the Northeast.

1986

Ideal begins to manufacture Segmental Retaining Wall Systems.



1987

Ideal begins production of permeable pavers

1998

Ideal produces Genuine Drum Rolled Tumbled™ paver and wall product.

2018

Ideal introduces Color with 4D Technology™.

2024

Ideal introduces HearthScapes™ Outdoor Fireplace line.

1989

Ideal installs the first robotic paver storage system in the United States.

2008

Ideal completes new construction at their original location in Waltham, MA. The building houses a new state of the art indoor and outdoor showroom, training center and a hardware store.

2023

Ideal celebrates it's 100th anniversary!

2025



Decades ago, Leo Burgoyne laid the cornerstone for a lasting legacy characterized by two core principles: **quality** and **service**. When he christened his enterprise “Ideal,” it wasn’t merely a reference to the machinery he used in production; it symbolized a pledge to uphold unparalleled standards of excellence and customer satisfaction. Built upon traditional family values, Ideal has remained steadfast in its mission to produce premium concrete products, enriching lives through the creation of exceptional outdoor living spaces.

Leo’s unwavering work ethic during the tumultuous eras of the Great Depression and World War II set a precedent for Ideal’s enduring dedication. His motto, **“Through service we grow,”** became a guiding beacon passed down through successive generations. Joe, Leo’s son, continued to navigate the company until 1990, ensuring that these principles remained the cornerstone of Ideal’s operations. Ideal doesn’t simply manufacture concrete blocks; it crafts the essence of outdoor living. That ethos has been faithfully embraced by the 3rd and 4th generations that followed.

Leo’s pursuit of manufacturing the highest quality concrete blocks can be found today in our line of outdoor living products that celebrate the New

England lifestyle. **“Life Embraced Outdoors”** isn’t just a slogan; it embodies Leo’s timeless dream from a century ago.

Today, Ideal doesn’t just meet standards; it sets them. The commitment to quality and service reverberates through every concrete paver, retaining wall block, and complementary concrete element, crafting environments that transcend boundaries.

Each day, Ideal continues to push the boundaries for homeowners, contractors, professional landscapers, commercial building owners, and architects, addressing their most exacting requirements. From pavers engineered with Color with 4D Technology™ to Drum—Roll Tumbled™ pavers and walls, Ideal offers patented solutions that exemplify excellence, setting new benchmarks for those who seek to embrace outdoor living.

This is why, when it comes to selecting an outdoor living solution, Ideal remains the premier choice for New Englanders, renowned for its quality, diversity, affordability, and durability.

Ideal’s design services can help you create a Life Embraced Outdoors.

Beacuse that’s the Ideal way.





PROJECT DESIGN & INSTALLATION: CHESTNUT GROVE DESIGNS
PHOTOGRAPHY: JESSICA DELANEY PHOTOGRAPHY

FEATURED PROJECT

PINE KNOLL MAGNOLIA

This oceanfront property was expertly transformed from an old cottage into a quintessential New England home by Chestnut Grove Design. The designers paid close attention to detail, ensuring a seamless flow between the interior and the outdoor living spaces.

After consulting with their clients, the Chestnut Grove team selected Ideal's Andover Collection for use throughout the property. This included a heated permeable paver driveway that melts snow and ice in winter, providing a warm welcome to the owners. Additional Andover Collection pavers were chosen for the front walkway, leading elegantly to the stunning backyard. In the upper terrace of the backyard, there is a comfortable seating area and a dining space that flows down to an outdoor kitchen and a gas fire pit, all boasting spectacular ocean views.

"Our clients desired a high-performance driveway and walkway product, and Ideal Block was our first choice for a top-quality product. Selecting the perfect paver required a balance of durability and aesthetic appeal. The permeable Andover Collection proved to be the ideal solution. We were drawn to its beautiful, earthy tones, which perfectly complemented the property's existing granite stone walls without overpowering them. These pavers are exceptionally solid, well-made, and durable, while also offering a fantastic visual impact. The end result perfectly matched our vision, and our clients are absolutely delighted with the final result."

~Ryan, Chestnut Grove Designs

CHESTNUT GROVE

LANDSCAPE



INTERIORS

EST. 2006

JESSICA
DELANEY
PHOTOGRAPHY



OUTDOOR LIVING



DISCOVER A LIFE EMBRACED OUTDOORS



























































THE



DIFFERENCE

WITH 4D

WITHOUT



With Color 4D's Advanced Technology, you get superior stain protection and effortless maintenance, ensuring lasting beauty and durability. Treated in our manufacturing facility, Color 4D pavers arrive ready to withstand the toughest conditions—whether from Mother Nature or everyday life.

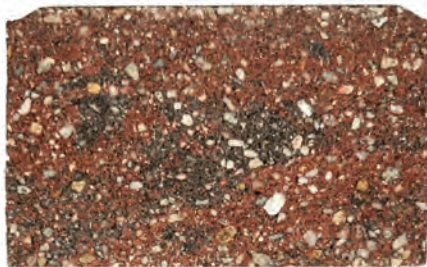
"More Than Just Concrete"



HOW **4D** COMPARES

Color 4D

- Next Generation of Optimized Protection
- "Pre-Sealed" Factory Applied Treatment
- Advanced Technology provides 4 dimensions of protection and resistance to surface wear
- Advanced Color Tones and Fastness



Traditional Thru Mix

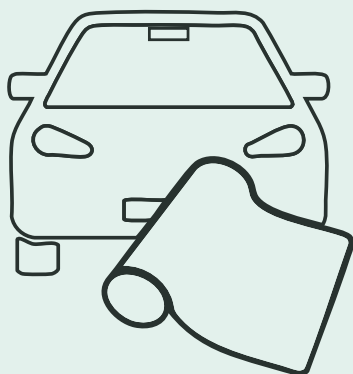
- Color rich composition
- Strong heterogeneous mix top to bottom
- Time tested durability & performance
- Surface and color age naturally over time
- Should be sealed for best protection against stains and wear



Traditional Face Mix

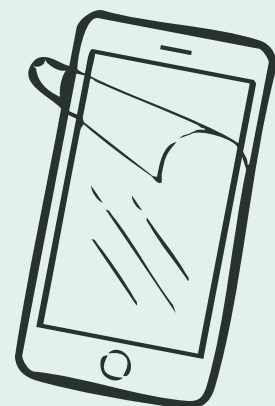
- Two-layer process consisting of a thin overlay of a fine mix over a coarse base
- Surface and color age naturally over time
- Should be sealed for best protection against stains and wear

Ideal Block produces a line of premium pavers featuring our Color4D with advanced technology as well as extensive line of traditional Thru Mix pavers. While Thru Mix has been the go-to for generations, **Color4D represents the future of pavement technology!**



Protect your hardscapes like you do your other investments!

Like paint protection film for your car and a screen protector for your phone, Color4D provides long lasting protection to keep your pavers looking new and vibrant!

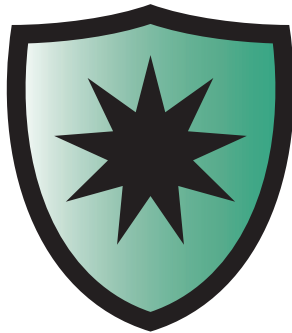


COLOR 4D With Advanced Technology

"More Than Just Concrete"



Advanced Acid
& Stain Resistance



Advanced Color
Tones & Fastness



Advanced **Efflo-Guard™**
Efflorescence Protection



Advanced Durability

Just as you safeguard your smartphone with a screen protector or shield your car with a paint protection film, it's essential to protect your outdoor surfaces from unsightly stains and wear. After all, who would invest in a luxurious couch without opting for a stain-resistant treatment? So why leave your patio, walkway, or driveway vulnerable?

Color 4D's Advanced Technology is your ultimate solution for superior stain protection and effortless upkeep, guaranteeing lasting beauty and durability. Treated in our manufacturing facility, Color 4D pavers arrive delivered to you ready to withstand the harshest elements of Mother Nature, as well as the demands of everyday life.

If you desire nothing but the best, look for the Color 4D with Advanced Technology logo on our product pages and at your local authorized dealer. Protect your investment and elevate your outdoor spaces today!



See the Difference
Color 4D with
Advanced Technology

COLOR 4D PAVERS



Note: Coping Shown was Sealed in the Field

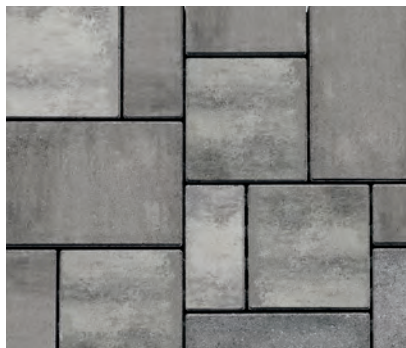


Andover Collection™

Smooth



Chatham Blend



Oxford Grey

APPLICATIONS



FEATURES



SIZE



11" W x 16.5" L x 2.75" H



5.5" W x 11" L x 2.75" H



11" W x 11" L x 2.75" H

ADDITIONAL INFORMATION





Andover Collection™

StoneCleft



Chatham Blend



Oxford Grey

APPLICATIONS



FEATURES



SIZE



11" W x 16.5" L x 2.75" H



5.5" W x 11" L x 2.75" H



11" W x 11" L x 2.75" H

ADDITIONAL INFORMATION



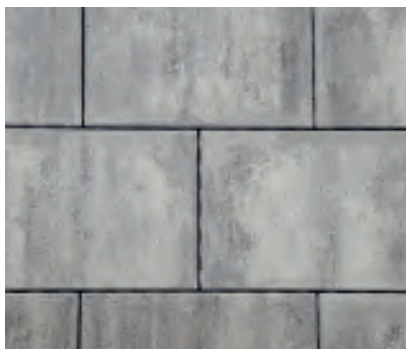
See Page 145 for
More Information



Andover GrandStone™ Smooth



Chatham Blend



Oxford Grey

APPLICATIONS



FEATURES



SIZE



16.5" W x 22" L x 2.75" H

ADDITIONAL INFORMATION



See Page 145 for
More Information



Andover 5511™ Smooth



Pewter



Chatham Blend



Oxford Grey



Graphite

APPLICATIONS



FEATURES



SIZE



5.5" W x 11" L x 2.75" H

ADDITIONAL INFORMATION



See Page 145 for
More Information



Andover 5511™

StoneCleft



Oxford Grey



Graphite

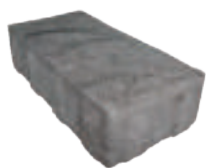
APPLICATIONS



FEATURES



SIZE



5.5" W x 11" L x 2.75" H

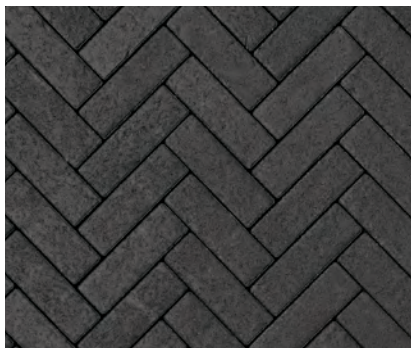
ADDITIONAL INFORMATION





NEW

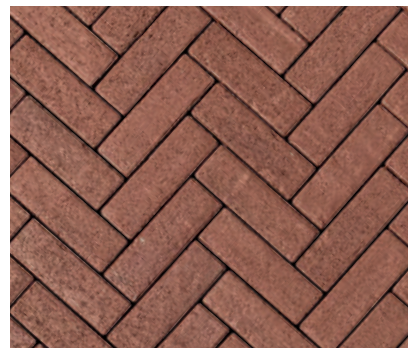
Newbury Brick™



Graphite



Pewter



Russet Red

APPLICATIONS



FEATURES



SIZE



2.75" W x 8.25" L x 2.75" H

ADDITIONAL INFORMATION



See Page 145 for
More Information



Portsmouth Cobble™



Oxford Grey



Graphite

APPLICATIONS



FEATURES



SIZE



5.5" W x 5.5" L x 2.75" H
 5.5" W x 6.65" L x 2.75" H
 5.5" W x 7.64" L x 2.75" H
 5.5" W x 8.8" L x 2.75" H

ADDITIONAL INFORMATION



See Page 145 for
More Information

*Pavers are wet



StraightLine™



Pewter



Oxford Grey



Graphite

APPLICATIONS



FEATURES



SIZE



4.25" W x 17.125" L x 4" H

ADDITIONAL INFORMATION



See Page 145 for
More Information



Windsor Slab™



Mineral Blue

APPLICATIONS



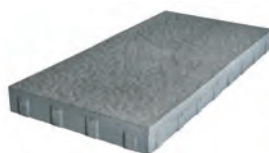
* Small Rec. Only

FEATURES



* Small Rec. Only

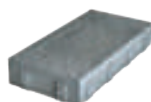
SIZE



Large Rectangle
16.5" W x 33" L x 2.75" H



Square
16.5" W x 16.5" L x 2.75" H



Small Rectangle
8.25" W x 33" L x 2.75" H

ADDITIONAL INFORMATION



See Page 145 for
More Information



TUMBLER PAVERS





MillStone™



Quarry Blend



Vineyard Blend

APPLICATIONS



FEATURES



SIZE



Square
6.312" W x 6.312" L x 2.375" H



Large Rectangle
6.312" W x 9.438" L x 2.375" H

ADDITIONAL INFORMATION





Georgetown Colonial™



Beacon Hill Blend



Quarry Blend



Vineyard Blend

APPLICATIONS



FEATURES



SIZE



4" W x 8" L x 2.375" H

ADDITIONAL INFORMATION





TRADITIONAL PAVERS





Boston Colonial Pavers®



Beacon Hill Blend



Vineyard Blend



Quarry Blend



Graphite

APPLICATIONS



FEATURES



SIZE



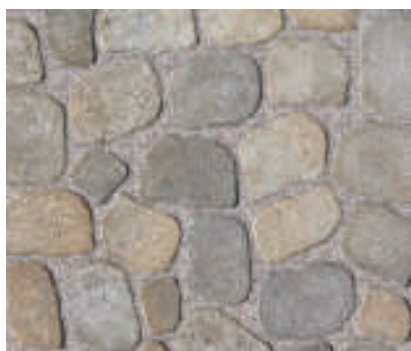
4" W x 8" L x 2.375" H

ADDITIONAL INFORMATION

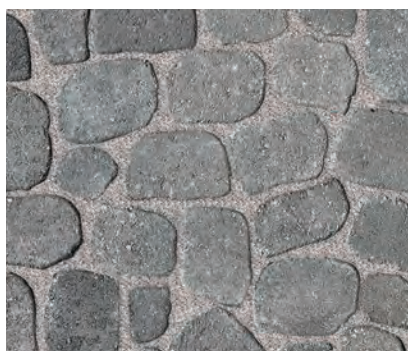




BrookStone™



Vineyard Blend



Quarry Blend



Graphite

APPLICATIONS



FEATURES



SIZE



2.75" H
11 different shapes and sizes

ADDITIONAL INFORMATION





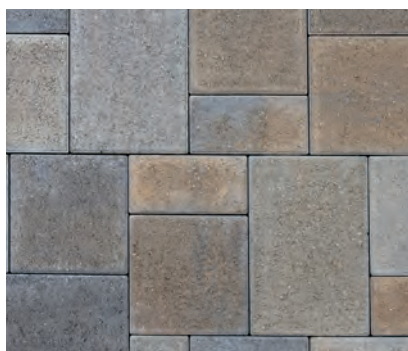
NEW

Ridge Hill Collection™

Smooth



Dover Grey



Forge Blend

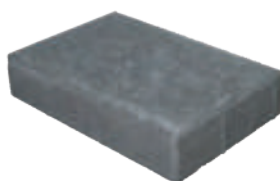
APPLICATIONS



FEATURES



SIZE



Large Rectangle
8" W x 12" L x 2.375" H



Small Rectangle
4" W x 8" L x 2.375" H



Square
8" W x 8" L x 2.375" H

ADDITIONAL INFORMATION





NEW Ridge Hill Collection™ StoneCleft



Dover Grey



Forge Blend

APPLICATIONS



FEATURES



SIZE



Large Rectangle
8" W x 12" L x 2.375" H



Small Rectangle
4" W x 8" L x 2.375" H



Square
8" W x 8" L x 2.375" H

ADDITIONAL INFORMATION





Yankee Cobble™



Beacon Hill Blend



Vineyard Blend



Quarry Blend



Graphite

APPLICATIONS



FEATURES



SIZE



Large Rectangle
6.312" W x 9.438" L x 2.375" H



Square
6.312" W x 5.312" L x 2.375" H



Grand Square
9.438" W x 9.438" L x 2.375" H



Circle Pak
Creates a circle from 32" to 133.5" in diameter
*Not available in Beacon Hill Blend

ADDITIONAL INFORMATION





PERMEABLE PAVERS





Aqua-Bric® & Aqua-Bric® 8



Beacon Hill Blend



Quarry Blend



Vineyard Blend

APPLICATIONS



FEATURES



AQUA-BRIC SIZE



Aqua-Bric
4" W x 8" L x 2.375" H

ADDITIONAL INFORMATION



Aqua-Bric



Aqua-Bric 8
(MTO only)

AQUA-BRIC 8 SIZE (MTO Only)



Aqua-Bric 8
4.5" W x 13.5" L x 3.125" H
(8 units per layer)



Aqua-Bric 8
4.5" W x 9" L x 3.125" H
(28 units per layer)



Turfstone™



Pewter

APPLICATIONS



FEATURES



SIZE



23.625" L x 15.75" W x 3.125" H

ADDITIONAL INFORMATION

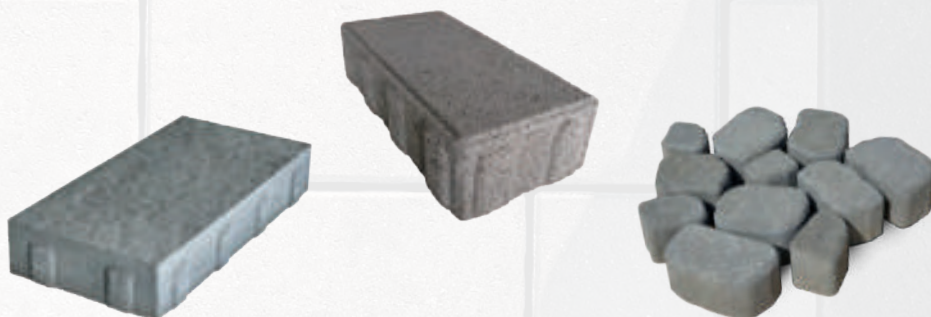






***Look for this logo on
our product pages.***

For a stylish solution to stormwater runoff, many
of our most popular pavers can be used as a
highly-effective permeable interlocking surface,
when installed with open-graded aggregate.



ANDOVER COLLECTION • BROOKSTONE • WINDSOR SLAB*

ANDOVER 5511 • PORTSMOUTH COBBLE



WALLS





Ancestral WallStone™ 3" & 6"



Vineyard Blend

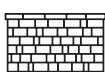


Quarry Blend



**Graphite
(3" Only)**

APPLICATIONS



*Up to 39"

FEATURES



3-way Alignment Plug



SIZE



12"/10"

3" and 6" high set

12"/14"

16"/14"



Field Split Corners
from 16"/14" unit

ADDITIONAL INFORMATION





Fat Face®



Vineyard Blend



Quarry Blend

APPLICATIONS



FEATURES



Reversible Alignment
Plug



SIZE



Fat Face
18" W x 10" D x 8" H



Corner Unit
15" W x 10" D x 8" H

ADDITIONAL INFORMATION





NEW

Fat Face® 2.0

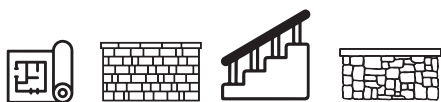


Vineyard Blend



Quarry Blend

APPLICATIONS



FEATURES



Reversible Alignment Plug



Mini Cell



Single Cell



SIZE



Front



Back

Face Unit
18" W x 10.125" D x 8" H



Corner Unit
15" L x 8" H x 6" D

ADDITIONAL INFORMATION





Olde Boston™ Wall



Pewter



Vineyard Blend



Quarry Blend



**Graphite
(Non-Tumbled)**

APPLICATIONS



FEATURES



SIZE



12" W x 8" D x 4" H

ADDITIONAL INFORMATION





Roman Pisa®



Vineyard Blend



Quarry Blend

APPLICATIONS



FEATURES



SIZE



Jumbo Unit
12"W x 8"D x 6" H



Stretcher
8"W x 12"D x 6" H



Stretcher Cap
8"W x 12"D x 6" H



Half Unit
4"W x 12"D x 6" H



Corner - Reversible
8"W x 12"D x 6" H

ADDITIONAL INFORMATION





COPING





Ancestral™ Coping



Vineyard Blend



Quarry Blend



Graphite

APPLICATIONS



FEATURES



SIZE



Ancestral - 2 Piece Set
3.63" H x 16 13/13" L x 13"D
3.63" H x 13 10/10" L x 13"D

ADDITIONAL INFORMATION



See Page 145 for
More Information



Universal Coping



Vineyard Blend



Quarry Blend



Graphite

APPLICATIONS



FEATURES



SIZE



3.63" H x 16" W x 13" D

ADDITIONAL INFORMATION



See Page 145 for
More Information



8" BullNose Coping

Single & Double Sided



Quarry Blend



Graphite

APPLICATIONS



FEATURES



SIZE



Single BullNose



Double BullNose

8" W x 14" D x 2.75" H

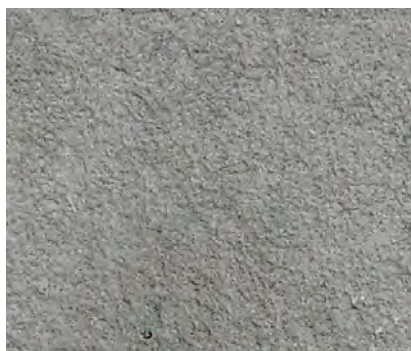
ADDITIONAL INFORMATION



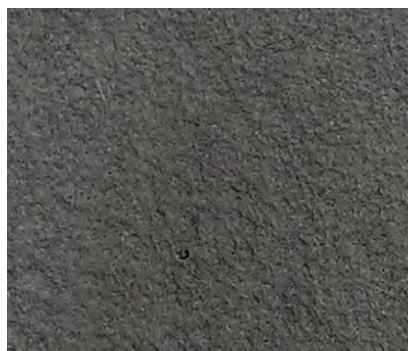
See Page 145 for
More Information



CastStone™ Rockface Coping



Slate Grey



Graphite

APPLICATIONS



FEATURES

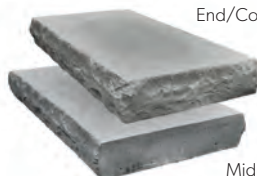


SIZE



Rockface along
all 4 edges

48" W x 24" D x 3" H



End/Corner Unit

Middle Unit

24" W x 14" D x 3" H

ADDITIONAL INFORMATION



See Page 145 for
More Information



ELEMENTS





NEW

Rockport™ Steps 2.0



Fieldstone Blend

APPLICATIONS



FEATURES



SIZE



Step A
54" W x 25" D x 7" H

Step B
48" W x 25" D x 7" H

Step C
25" W x 28.5" D x 7" H

ADDITIONAL INFORMATION





Rockport™ Pathway Stones



Fieldstone Blend

APPLICATIONS



FEATURES



SIZE



RPS A
25.75" W x 18.125" D x 2.75" H



RPS B
34" W x 21.875" D x 2.75" H



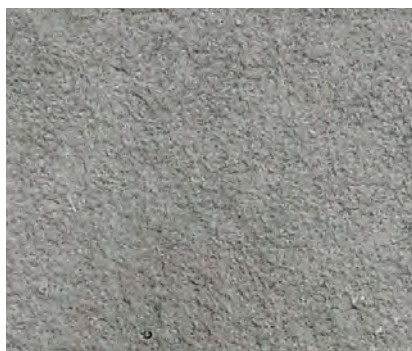
RPS C
30.75" W x 22.25" D x 2.75" H

ADDITIONAL INFORMATION





Chelmsford Step™



Slate Grey

APPLICATIONS



FEATURES



SIZE



Rockface side
48" W x 15" D x 7" H



Feather and Wedge side
48" W x 15" D x 7" H

ADDITIONAL INFORMATION



*Cap Sealed in the Field



Carlisle Pillar Cap™



Slate Grey



Graphite

APPLICATIONS



FEATURES



SIZE



24" W x 24" D x 3" H

ADDITIONAL INFORMATION



See Page 143 for
More Information



Olde Boston™ Fire Pit



Pewter



Vineyard Blend



Quarry Blend



**Graphite
(Non-tumbled)**

APPLICATIONS



SIZE



12" W x 8" D x 4" H
12/course

CASTSTONE FIRE PIT COPING



CastStone Square Fire Pit Coping
Slate Grey & Graphite
(Slate Grey shown)

FEATURES



STEEL INSERT OPTIONS



Square
*Bolt Assembly

ADDITIONAL INFORMATION



Product



Installation



Roman Pisa® Fire Pit



Vineyard Blend



Quarry Blend

APPLICATIONS



FEATURES



SIZE



Jumbo Unit
12"W x 8"D x 6" H
8/course



Corner - Reversible
8"W x 12"D x 6" H
4/course

STEEL INSERT OPTIONS



Square
*Bolt Assembly

CASTSTONE FIRE PIT COPING



CastStone Square Fire Pit Coping
Slate Grey & Graphite
(Slate Grey shown)

ADDITIONAL INFORMATION



Product



Installation



ScapeStone™ & ScapeStone™ XL Fire Pit



Vineyard Blend



Quarry Blend

APPLICATIONS



FEATURES



SIZE



12" W x 6" D x 4" H
ScapeStone 11 units/course
ScapeStone XL 14 units/course

STEEL INSERT OPTIONS



Round Ring
ScapeStone - 30" Dia x 8" H
ScapeStone XL - 44" Dia x 8" H



Round Ring-n-Grate
ScapeStone - 30" Dia x 8" H

CASTSTONE FIRE PIT COPING



CastStone Round Fire Pit Coping
Slate Grey & Graphite
(Slate Grey shown)

ADDITIONAL INFORMATION



Product



Installation



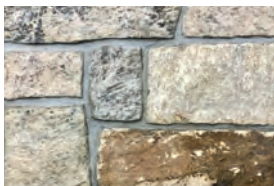
HEARTHSCAPES





Belknap™ Series

VENEER IDEAS



Ashlar



Mosaic



Ledgestone



**Square &
Rectangle**



Rounds

*Fireplace must be veneered
*See page 137 for full list of veneer options

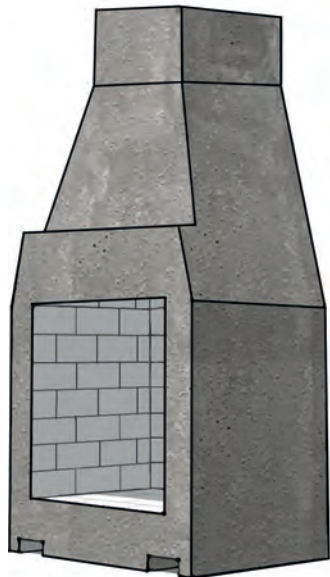
APPLICATIONS



FEATURES



SIZE



44" W x 29.50" D x 77.75" H

ADDITIONAL INFORMATION



Product



Installation



Fairfield™ Series

VENEER IDEAS



Ashlar



Mosaic



Ledgestone



**Square &
Rectangle**



Rounds

*Fireplace must be veneered
*See page 137 for full list of veneer options

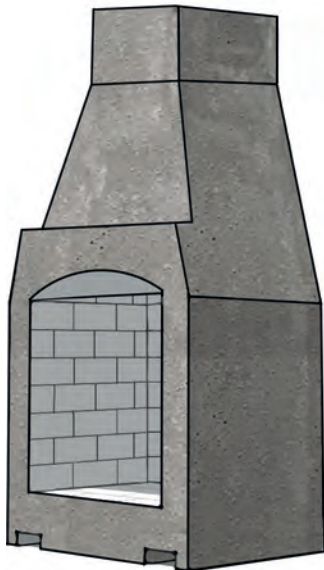
APPLICATIONS



FEATURES



SIZE



44" W x 29.50" D x 77.75" H

ADDITIONAL INFORMATION



Product



Installation



Universal Side Storage Box

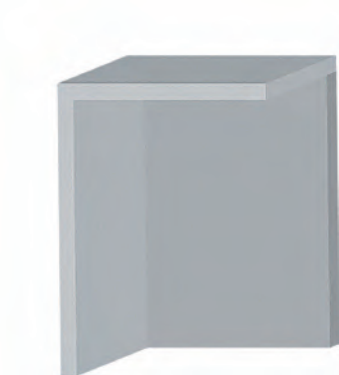
APPLICATIONS



FEATURES



SIZE



30" W x 26" D x 30" H

ADDITIONAL INFORMATION



Product



Installation

Chimney Extension

APPLICATIONS



FEATURES



SIZE



22" W x 22" D x 12" H

ADDITIONAL INFORMATION



Product



Installation



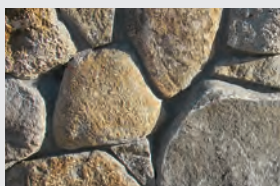
NATURAL STONE





Natural Stone Veneer

IDEAL EXCLUSIVE

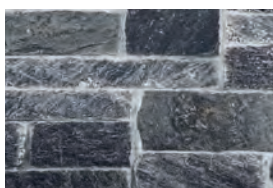


Natural Rounds



Mountain Mist Mosaic

CONNECTICUT GRAY



Ashlar



Mosaic



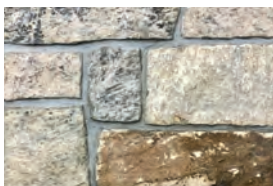
Ledgestone



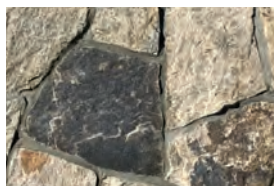
Square & Rectangle

THOMPSON
stone

CONNECTICUT TAN



Ashlar



Mosaic



Ledgestone



Square & Rectangle

N.E. BLEND



Ashlar



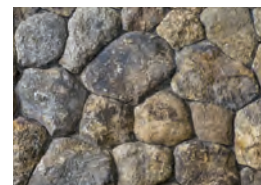
Mosaic



Ledgestone



Square & Rectangle



Rounds

PANGAEA



West Coast Ledgestone



Providence Ledgestone



Providence 4-Course Ashlar



Diamond River 4-Course Ashlar



APPLICATIONS



SIZE

Thin Veneer Flats	1.5" +/- Thickness
Thin Veneer Corners	1.5" +/- Thickness
Full Bed Depth	4" - 6" Thickness

FEATURES



ADDITIONAL INFORMATION





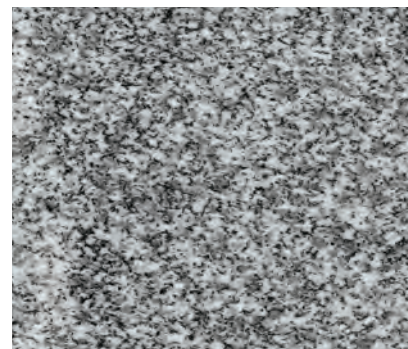
Granite



Salt & Pepper Granite



Blue Mist Granite



Stanstead Granite

APPLICATIONS



FEATURES



SIZE



Pattern
12" x 12" - 24" x 36"



Treads
3' - 8' W x 12" D x 2" H



Platforms
3' - 8' W x 2' - 4' D x 7" H



Steps
3' - 8' W x 13" D x 7" H

ADDITIONAL INFORMATION





Bluestone

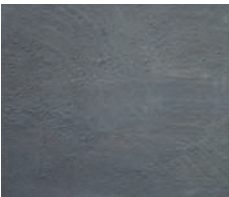


PA Blue

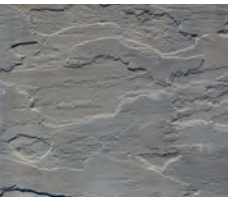


Full Color

FINISHES



Thermal Finish
(Pattern & Treads Only)



Natural Cleft Finish

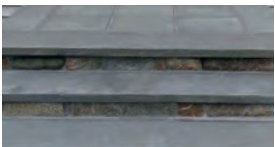
APPLICATIONS



FEATURES



SIZE



Treads
3' - 8' W x 12" D x 2" H



Pattern
12" x 12" - 24" x 36"

ADDITIONAL INFORMATION



PA Flagging
Irregular shapes & sizes



Bulk & Palletized Stone



PA Natural



Colonial Grey



Weathered Fieldstone



**New England Natural
Rounds (Ideal Exclusive)**



Connecticut Tan Wallstone



Connecticut Gray Wallstone



Colonial Grey Risers



Granite Cobbles

FEATURES



APPLICATIONS



ADDITIONAL INFORMATION



MEETING EXPECTATIONS

As you consider a new walkway, patio, driveway, landscape wall, or other hardscape project, you have lots of choices as to which product and color to select. It's an important decision. After all, it's an investment that should meet your expectations for years to come. So we thought it would be helpful and responsible to pass along some sound advice.

What should be realistic expectations for your pavement or wall? Our pavers, walls and garden products are commercial grade – unlike similar products found in large home improvement stores. Ours are factory made and delivered in ready-to-use condition that meets the highest industry standards. This means they are strong, dense and durable. Properly installed, your pavement and landscape walls will provide years of lasting beauty and dependable performance!

Ideal has made and sold hundreds of millions of paving stones and countless landscape walls since 1975. In fact, no other manufacturer has sold more in New England than Ideal. Our name has become synonymous with quality, service and reliability. While some manufacturers would lead you to believe their pavers and walls will never change in appearance, we believe in a more realistic position. After all, over time Mother Nature takes her toll on everything! We keep this in mind in our design. So while normal wear and tear and exposure to the elements are part of the natural aging process, you can expect the color tones, shape and pattern of Ideal products to remain for a lifetime!

Colors: Our Beauty is More Than Skin Deep

Our pavers and walls are saturated with rich colors...top-to-bottom...not just at the surface. Because color is throughout, chips, dings and scratches, which are inevitable, quickly "blend-in" and are hardly discernible. Don't be fooled by products where color is concentrated only at the top surface. After all, our products are a lifetime investment.

Our Process: It's Only Natural

Our pavers and walls are made with natural ingredients. Look closely and you will find a unique character to each and every paver and wall. In fact, no two look exactly alike. You will see subtle variations in color and texture for a truly natural appearance. Our color blends contain two or more pigments to achieve a random variegation and even our solid colors have nuances in tone and hue. Please remember that, unlike a painted surface, concrete products have inherent texture and shade variations. The product you receive may vary in color and texture from samples. Cubes of product may contain a different percentage of colors and textures than shown in this catalog. As you would with dye lots in fabric and carpet, purchase your pavers and walls all at one time. When installing, select product randomly and simultaneously from several cubes for uniform color distribution.

A Picture is Worth a Thousand Words

How true the saying is that a picture conveys an image that words can never describe. That is why we use pictures generously throughout this catalog to depict our products. And yet many factors influence one's perception of images and colors, and they may appear different from one photo to the next. Angle of light and time of day greatly affect perception, and colors printed in ink cannot exactly match the actual concrete product colors. The point we are trying to make is the images shown in this catalog are only the first step in selecting colors. Once you have narrowed your choices, obtain actual samples from your dealer or contractor. View them in the setting where they will be installed before making your final selection.

Tumbled or Traditional: We come close to fooling Mother Nature

We manufacture our pavers and walls with a choice of finishes. Choose pavers with a traditional surface or ones with the look and feel found in vintage pavements. From our wall collection select styles with a rugged split face or our tumbled finish that resembles handcrafted walls of yesteryear. To faithfully reproduce the color, texture and durability of vintage stone, we use an innovative technology that enables us to impart an "old world" charm using a unique factory process that antiques the surface, while preserving the inherent structural stability. We call it Genuine Drum-Roll Tumbled, and although it takes more time and effort than automated processes used by other manufacturers, it creates pavers and wallstones that truly capture the nostalgia of time-honored colors and textures of natural materials.

Efflorescence, Poly Haze & Product Film

Efflorescence, poly haze, and product film are white substances that sometimes appear on the surface of concrete and masonry products. While they may look similar, they have different causes. Efflorescence often is a by-product of cement hydration and appears as white, chalky halos. Poly haze is a uniform residue of polymeric sand that was not completely cleaned off the surface. Product film is sporadic streaking due to moisture accumulating on the surface during storage. These conditions are cosmetic; they are not harmful nor do they affect longevity or performance. Typically, they will lessen or dissipate over time with exposure to rain, snow, and normal wear. For quicker results, specialty cleaners can be used; carefully follow label directions.

Where the presence of these conditions does not indicate defective products, we exclude them from our warranty and do not accept responsibility or liability for their appearance on our pavers and walls. Should they occur, we recommend contacting your dealer or contractor for advice. For further information, please visit our website.

Color & Product Packaging Directory

Please note: Product offerings may change during the year. Please visit **IdealBlock.com** for the most up-to-date Color and Product Packaging Directory information.

Lifetime Warranty

We back our pavers and walls with our Name and a Lifetime Warranty on the structural integrity of our products used in residential applications. Product that proves to be defective by failing to meet ASTM industry standards will be replaced without cost. We will do our best, but color, texture and finish of replacement product may not match the original, and cost of labor is not included. Proof of purchase is required. All warranty claims must be made prior to removal or disposal of product in question and be approved in writing. Please note, color variance, efflorescence, poly haze and product film do not constitute an actionable claim against our warranty. Other exclusions apply. Please visit www.IdealBlock.com/warranty for complete details.

Snow, Ice and Deicers

Our pavers and walls are more than beautiful. They have the strength and durability to withstand New England's harsh winters and, when properly installed, snow removal is no problem...either by shovel, snow blower or a plow using a rubber or poly plastic cutting edge.

The surface of our pavers is slip and skid resistant even when wet. Ice, on the other hand, can be slippery, particularly as it melts, and common sense should be used to prevent slips and falls. We recommend sand for traction. It can be applied liberally and as often as needed. Sand provides a visual reference of its presence and can be felt underfoot as a tangible medium aiding foot traffic. Clean, untreated sand has no corrosive effect on steel, metal, clay brick, cast-in-place concrete or concrete pavers and it can be swept into the paver joints or removed by conventional sweeping or vacuuming.

Concrete pavers are exceptionally robust in resisting the effects of deicing chemicals. We have manufactured pavers that have been exposed to salts for over 50 years! Nevertheless, chlorides can be harmful to concrete, steel and other building materials depending on the type, concentration and frequency of application. If using a deicer, we recommend a NaCl sodium chloride. We strongly advise against the use of other types, particularly magnesium and potassium chloride, and products that contain a blend of these chemicals.

Visit IdealBlock.com to Learn More

- Where to buy
- Wall Guide to selecting the best style
- Photo gallery
- Technical specifications
- Easy to follow how-to instructions
- Contractor Paver and Wall Guides
- Product literature
- Cross sections and drawings
- Paver and Wall Comparison Charts
- Case studies
- Patterns
- Cleaning and sealing guide

Affiliated Organizations

Ideal proudly supports organizations in the industry by taking an active leadership role in developing standards and best practices that serve to advance the industry for its members, community, and constituency.



ANDOVER COLLECTIONTM GRANDSTONETM & 5511TM

This product is susceptible to scuffing during installation and snow removal. Protect the surface when transporting and handling. Use a roller compactor or urethane pad attached to the compactor plate when compacting. When removing snow, the height of snow blowers and plows must be raised or a poly blade used on the plow edge.

NEWBURY BRICKTM

This product is susceptible to scuffing during installation and snow removal. Protect the surface when transporting and handling. Use a roller compactor or urethane pad attached to the compactor plate when compacting. When removing snow, the height of snow blowers and plows must be raised or a poly blade used on the plow edge.

PORTSMOUTH COBBLETM

This product is susceptible to scuffing during installation and snow removal. Protect the surface when transporting and handling. Use a roller compactor or urethane pad attached to the compactor plate when compacting. When removing snow, the height of snow blowers and plows must be raised or a poly blade used on the plow edge.

STRAIGHTLINETM

This product is susceptible to scuffing during installation. Use a urethane pad attached to the compactor plate or spread a thin layer of sand or sheet of geotextile fabric over the surface when compacting.

WINDSORTM SLAB

This product is susceptible to scuffing during installation and snow removal. Protect the surface when transporting and handling. Use caution not to chip edges when placing with clamp. Roller equipped compactor ONLY to be used when compacting. When removing snow, adjust height of snow blowers to avoid scratching surface. Do NOT plow.

RIDGE HILL COLLECTIONTM

This product is susceptible to scuffing during installation and snow removal. Protect the surface when transporting and handling. Use a roller compactor or urethane pad attached to the compactor plate when compacting. When removing snow, the height of snow blowers and plows must be raised or a poly blade used on the plow edge.

YANKEE COBBLETM

This product is susceptible to scuffing during installation. Use a urethane pad attached to the compactor plate or spread a thin layer of sand or sheet of geotextile fabric over the surface when compacting.

GRAPHITE

Products of this color are susceptible to scuffing during installation. To avoid visible scratches use a urethane pad attached to the compactor plate or spread a thin layer of sand or sheet of geotextile fabric over the surface when compacting. Non-Color 4D products in Graphite color, should be sealed with a solvent based sealer to maintain fastness.

PROFESSIONALLY INSTALLED OR DO-IT-YOURSELF? WE CAN HELP

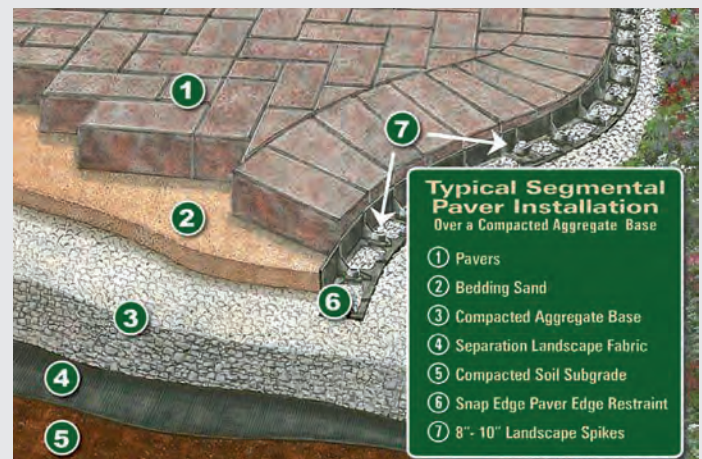


Deciding often depends on the size and scope of the work, as well as how ambitious you are. While small walks may be a weekend project, others will take far longer. Your Ideal dealer can suggest contractors suited for your project. Be sure to check references, visit projects they have installed, make sure they have insurance and...get it in writing!!

Visit our website www.IdealBlock.com for more helpful tips on hiring a contractor. For the ambitious DIY-er we have easy-to-follow instructions that will guide you step-by-step for beautiful results. Ask your Ideal Authorized Dealer for one of our paver or wall installation booklets or download them from our website.

TRADITIONAL PAVER INSTALLATION

- Excavate and thoroughly compact area to be paved.
- Install and compact base in 2-4" layers (1 ½" processed gravel or ¾" minus crusher run).
 - Typically 4-6" deep for walkways and patios
 - Typically 6-8" deep for pool decks
 - Typically 8-12" deep for driveways
 - See your Dealer for more information
- Install edge restraints directly on the base and secure with 10" steel spikes.
- Spread coarse concrete sand as a setting bed and screed to a uniform depth of 1" thick.
- Starting from a 90° corner, place pavers in desired pattern and cut where necessary to fit. Use 2 ¾" and 2 ¾" thick pavers for most residential applications and 3 ⅛" thick pavers for commercial vehicles.
- Compact the pavers into the sand bed with a plate compactor, roller compactor or rubber mallet.
- Sweep dry sand into joints and compact. Repeat procedure until the joints are full. If using polymeric sand follow manufacturer's directions.

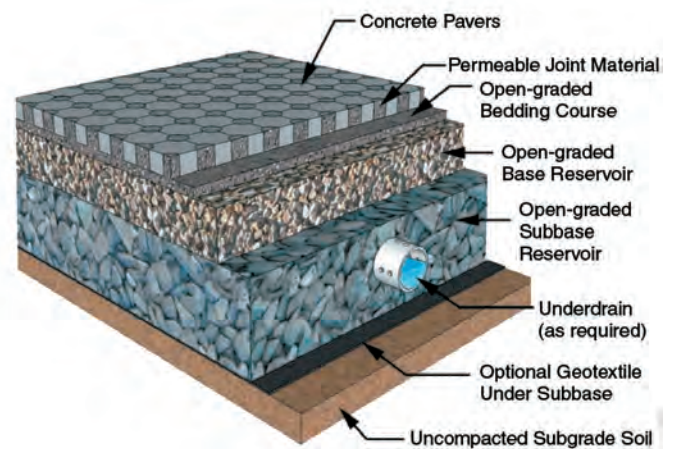


Note: Poor draining soils, such as clay, may require additional excavation and base material and the use of a woven geotextile fabric.

PERMEABLE PAVER INSTALLATION

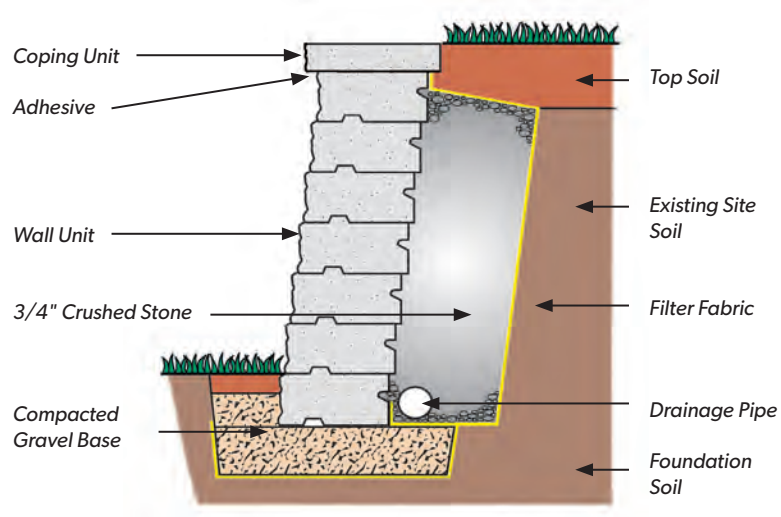
While similar to traditional pavers, this installation method contains a few important differences.

- Processed gravel can be used as a base, but we recommend open-graded stone, preferably 1 ½" open-graded crushed stone, for peak performance.
- Deeper excavation is required.
 - Typically at least 6-8" for walkways and patios
 - Typically a minimum of 8-12" for driveways
- The setting bed increases to 2".
- ¾" crushed stone is used for the setting bed.
- ¼" chip stone is used to fill the joints and openings.
- Edge restraint requires the use of the Berm Method, CurbStone Edging, SEK PermEdge, or SEK EdgeCrete.



RETAINING WALL INSTALLATION

- Excavate a trench at least 12" deep by 24" wide for the length of the wall.
- Compact the subgrade soil thoroughly and line the excavated area with landscape fabric.
- Fill the trench with 1 1/2" processed gravel or 3/4" crusher run base material and firmly compact in 2-3" layers until base is at least 6" thick.
- Place and level the first course of wall units on the base.
- Place perforated pipe behind the wall for drainage and backfill with 3/4" crushed stone.
- Place successive courses by stacking wall units on top of the row below, staggering joints as you go.
- Depending on the style wall selected, units will connect and automatically step back with plugs or a tongue and groove.
- Backfill with 3/4" crushed stone behind each course and in each core of the block if applicable and compact.
- Finish the wall by attaching the coping units with professional grade wall block adhesive.



SPECIAL CONSIDERATIONS

Walls 39" and higher, terraced walls, sites with weak or wet soils, slopes and other loading conditions, such as a driveway above the wall, require special consideration. These should be built as reinforced walls using other construction techniques, including the use of geogrid. A civil/soils engineer and a professional contractor should be used for these situations.

GravityStone® retaining walls, pillars, and free-standing walls require different construction methods. Please see our wall guides available at www.IdealBlock.com for more information on installation.

Play it safe and contact your Ideal Block Authorized Dealer for more information regarding the above special considerations.

WALL GUIDE CHART

Product	Double-Sided Free Standing	Sitting Wall	Garden Wall <27"	Retaining Wall <39"	Retaining Walls >39" <72"	Retaining Walls >72" <96"	Retaining Walls >96"
Ancestral Wall	A Best Choice	A Best Choice	A Best Choice	Yes	No	No	No
Olde Boston WallStone	Yes	Yes	A Best Choice	No	No	No	No
Roman Pisa	No	No	Yes	Yes	Yes with Grid	Yes with Grid	Yes with Grid
Fat Face	No	No	Yes	Yes	Yes with Grid	Yes with Grid	Yes with Grid
Fat Face 2.0	Yes	No	Yes	Yes	Yes with Grid or with Trunk & Anchor	Yes with Grid or with Trunk & Anchor	Yes with Grid or with Trunk & Anchor

* Note: Maximum height when battered back & properly designed.

Trademark Information

Andover Collection™, Andover 5511™, Boston Colonial Pavers®, Yankee Cobble™, MillStone™, BrookStone™, Portsmouth Cobble™, CastStone Coping™, CurbStone™, ScapeStone™, Olde Boston™ Wall, Ancestral WallStone & Coping™, Chelmsford Step™, Carlisle™ Pillar Cap, RockPort™ Steps & Pathway Stones, Universal Coping™, Color with 4D Technology™, Newbury Brick™, Ridge Hill Collection™, Rockport Steps™ 2.0, HearthScapes™, Fairfield™, Belknap™, Andover Grandstone™, StraightLine™, are trademarks of Ideal Concrete Block Co.

Ideal is contracted to produce a number of products under exclusive license agreements

Roman Pisa® is a registered trademark of RisiStone.

Fat Face® and Fat Face 2.0® are a registered trademark of Westblock Sysytems, Inc.

Aqua-Bric® and Aqua-Bric 8™ are registered trademarks of Advanced Pavement Technology



QUALITY • SERVICE • RELIABILITY

Ideal – A 4th generation family-owned business, we take pride in honoring the Ideal tradition of quality and service, which has been proudly passed down through four generations of the Burgoyne family.

A name you can rely on! – We have made New England our home for over 100 years and, in 1975, were one of the first companies in the United States to manufacture concrete pavers. We bring you over 50 years of experience and have sold millions of square feet of pavers and countless walls throughout New England! You can feel confident using Ideal. Our products are backed by a Lifetime Warranty and our name. After all, you might say we are time tested...since 1923.

Our commitment to quality – We take great pride in producing the finest concrete products. They are manufactured according to strict industry specifications and benchmarked by our exacting internal standards. Our commitment to excellence ensures superb quality, exceptional strength, lasting durability, and consistent, rich color.

We are here for you – Ideal values our relationship with our customers. We have partnered with an extensive network of Authorized Dealers throughout New England who share our core values to provide responsive customer service and expertise that meets your needs.

45-55 Power Road, Westford, MA 01886
232 Lexington Street, Waltham, MA 02452
Phone: 781.894.3200
www.IdealBlock.com

